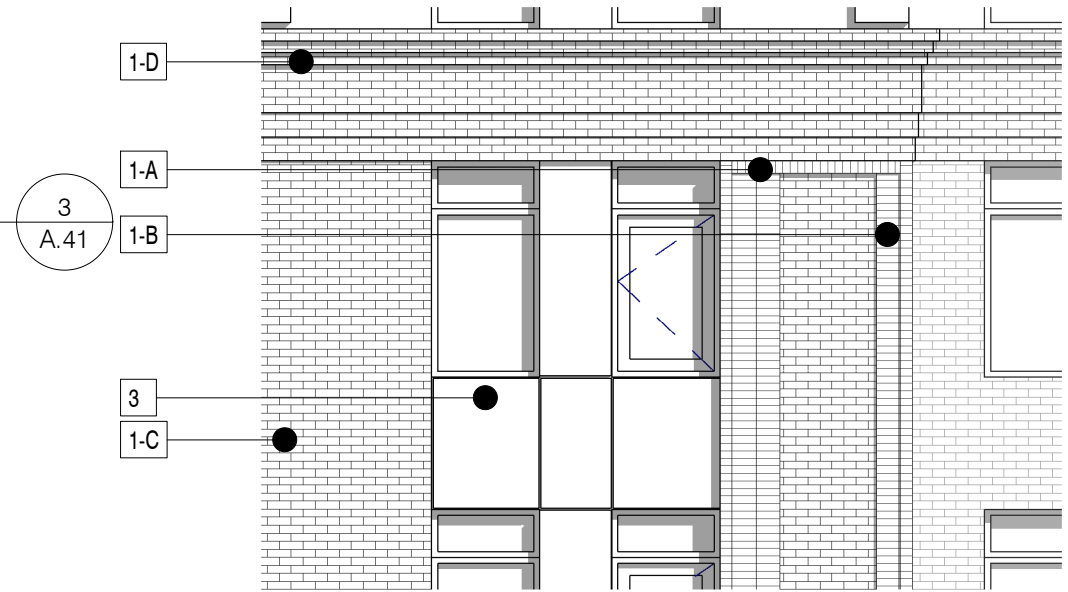
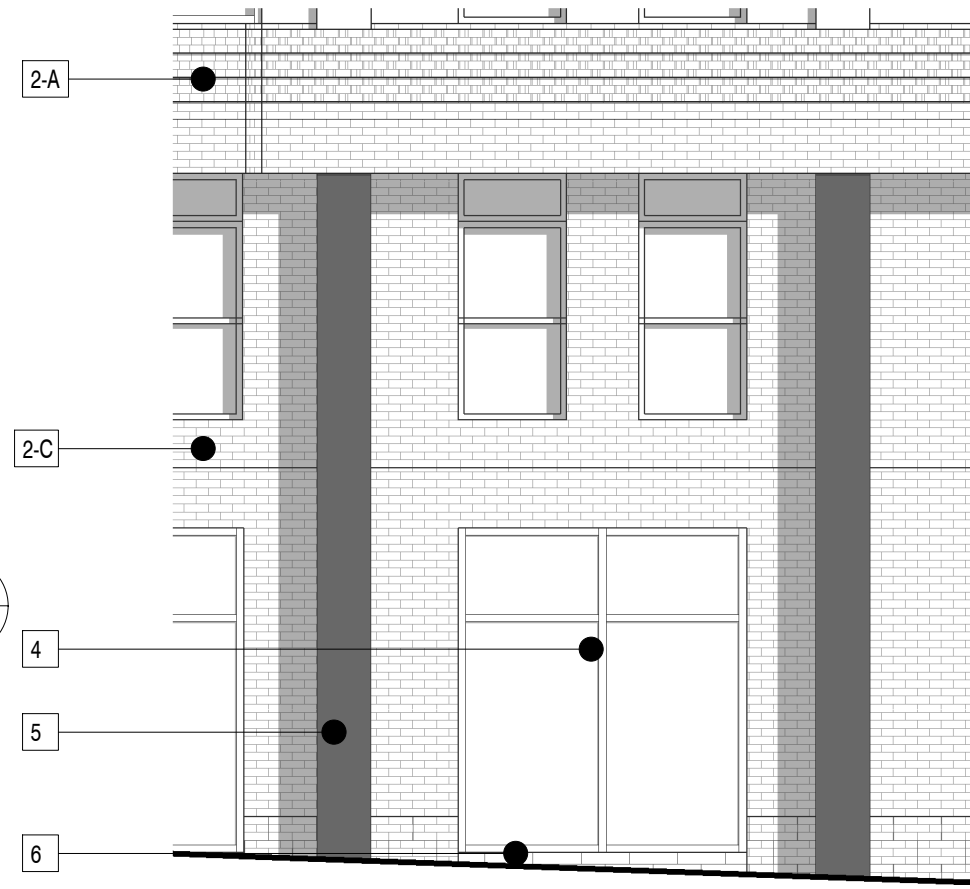


① Partial Section 1  
1/16" = 1'-0"

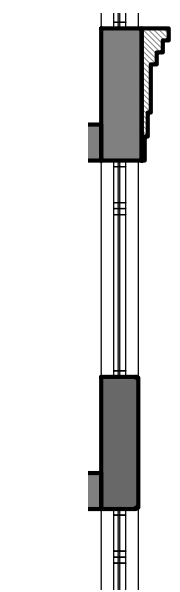
② Partial Elevation 1  
1/16" = 1'-0"



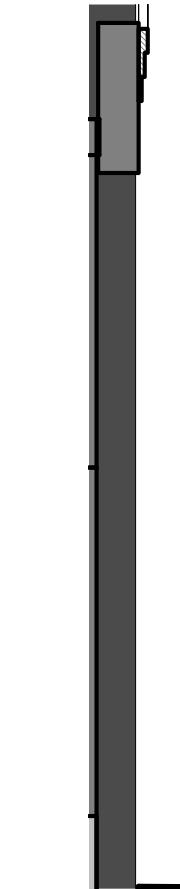
③ Partial Elevation 1 - Callout 1  
3/16" = 1'-0"



④ Partial Elevation 1 - Callout 2  
3/16" = 1'-0"



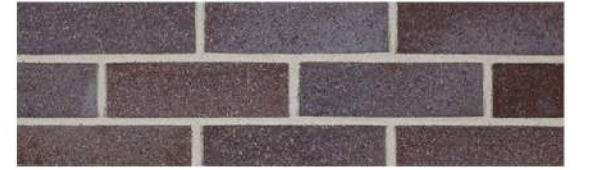
⑤ DETAIL 1  
3/16" = 1'-0"



⑥ DETAIL 2  
3/16" = 1'-0"



1. ET CLAY \_ HERITAGE RED BLEND BRICK  
A. SOLDIER BRICK PATTERN  
B. STACK BRICK PATTERN  
C. RUNNING BOND STANDARD BRICK  
D. BRICK CORNICE



2. BELDEN \_ ASHBERRY VELOUR BRICK  
A. SOLDIER BRICK PATTERN  
B. STACK BRICK PATTERN  
C. RUNNING BOND STANDARD BRICK  
D. BRICK CORNICE



3. NICHIBA \_ GREY SMOOTH NICHIPANEL



4. STOREFRONT

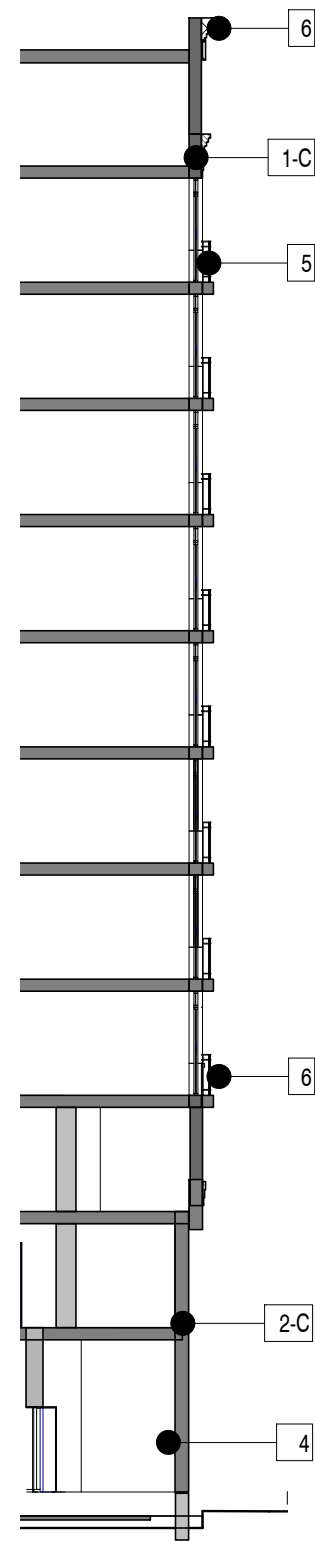


5. PAINTED CONCRETE COLUMN

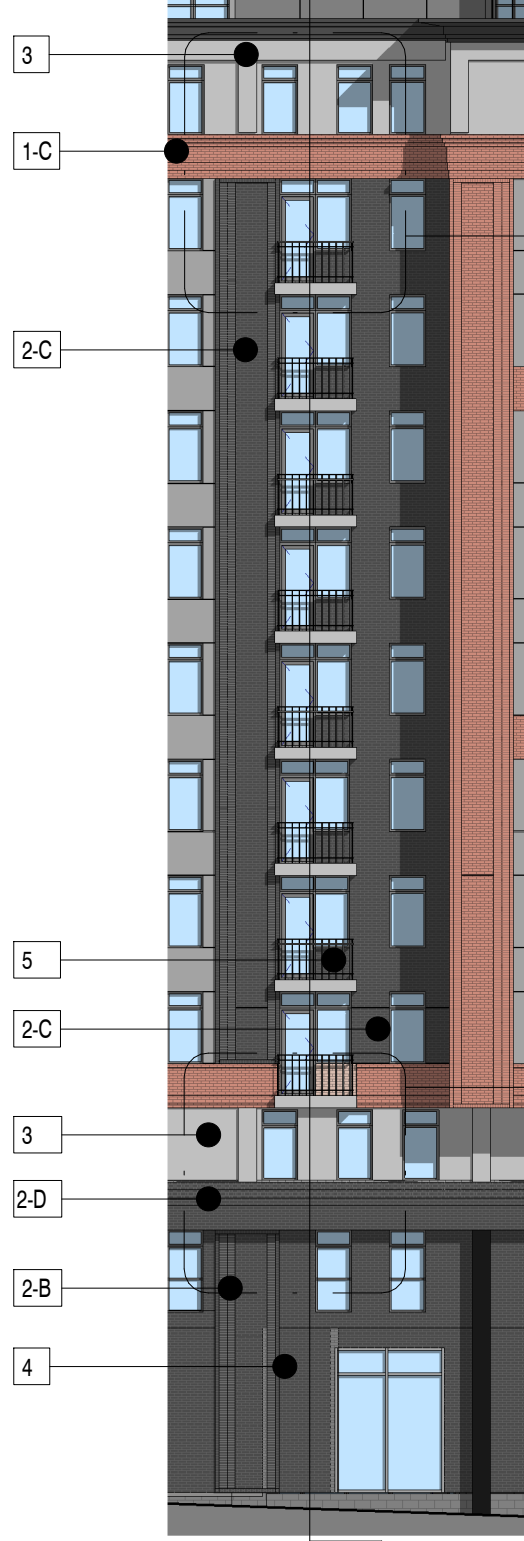


6. STONE BASE

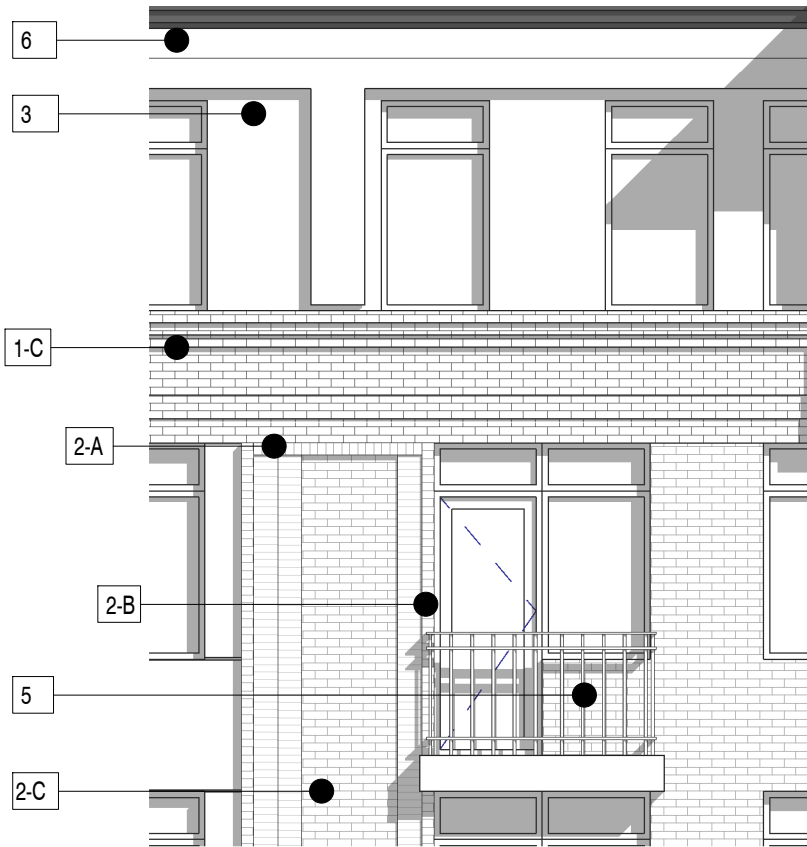
1. Flexibility is requested to vary the final selection of the exterior materials within the color ranges and material types as proposed without reducing the quality of the materials and to make minor refinements to exterior details and dimensions.
2. Flexibility is requested to vary the approved signage provided it is consistent with the indicated dimensions and materials.
3. Flexibility is requested to vary the non-residential storefront and associated features and fixtures in public space subject to individual tenant modifications.
4. Flexibility is requested to vary exterior ornamentation based on comments from National Park Service.
5. Flexibility is requested to vary the window frames to light grey, grey or black.



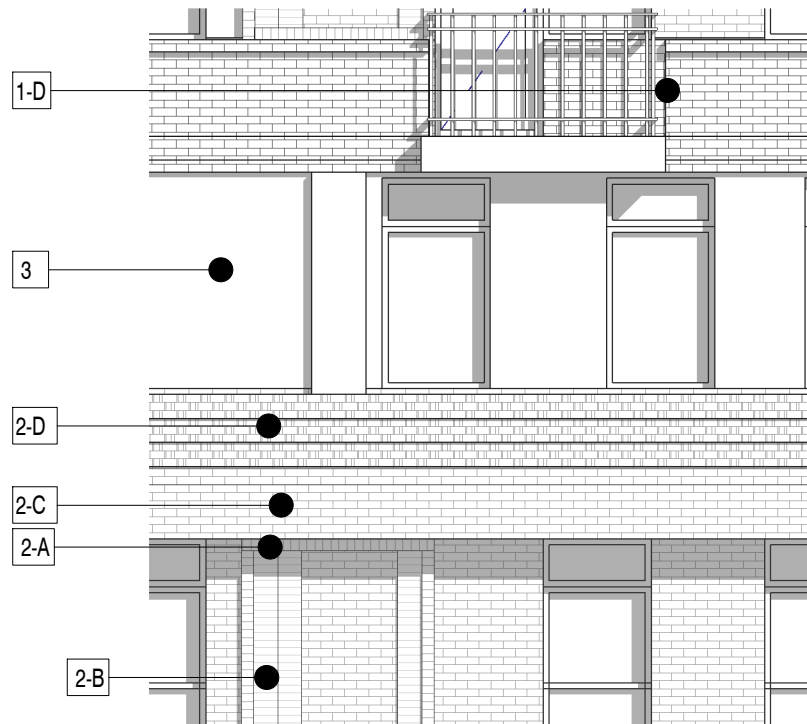
1 Partial Section 2  
1/16" = 1'-0"



2 Partial Elevation 2  
1/16" = 1'-0"



3 Partial Elevation 2 - Callout 1  
3/16" = 1'-0"



4 Partial Elevation 2 - Callout 2  
3/16" = 1'-0"



1. ET CLAY  
HERITAGE RED BLEND BRICK

- A. SOLDIER BRICK PATTERN
- B. STACK BRICK PATTERN
- C. RUNNING BOND STANDARD BRICK
- D. BRICK CORNICE



5. METAL BALCONY /  
JULIETTE RAILING



2. BELDEN  
ASHBERRY VELOUR BRICK

- A. SOLDIER BRICK PATTERN
- B. STACK BRICK PATTERN
- C. RUNNING BOND STANDARD BRICK
- D. BRICK CORNICE



6. METAL COPING SYSTEM



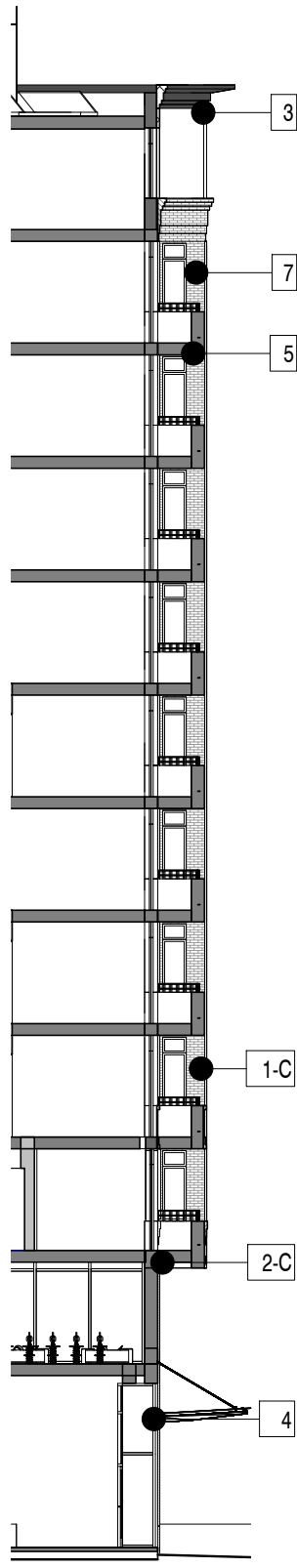
3. NICHIIHA\_GREY SMOOTH NICHIPANEL



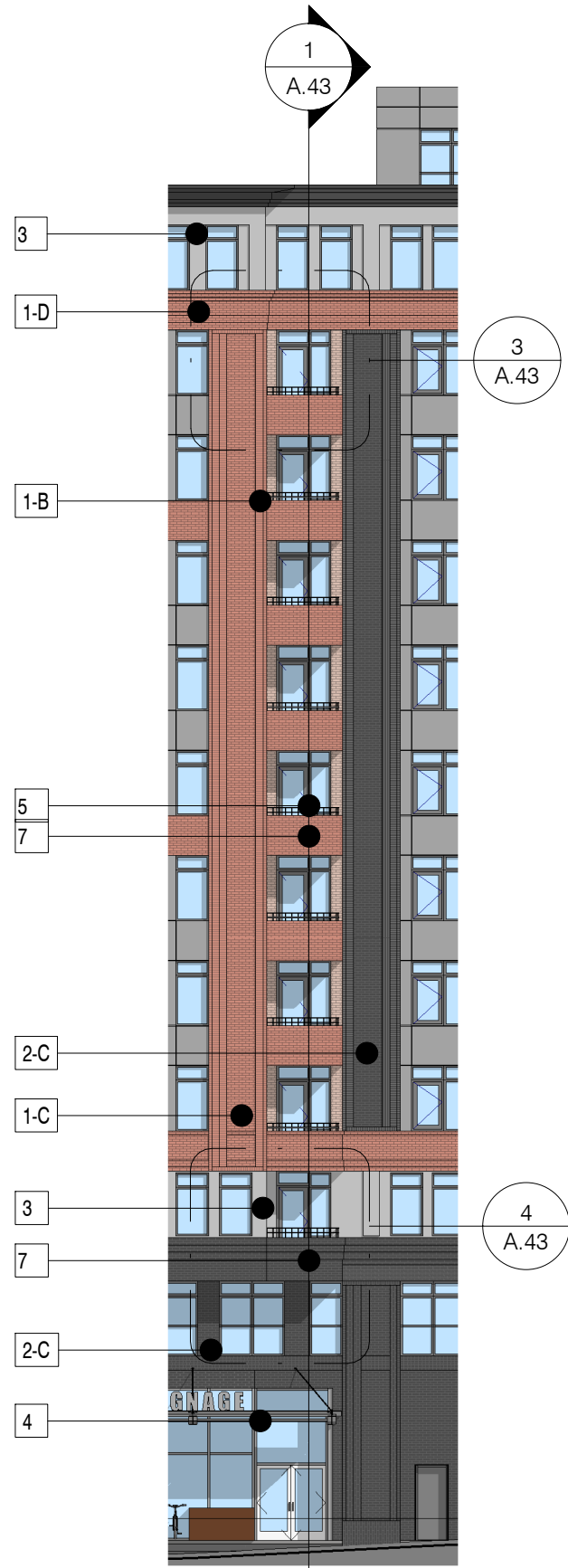
4. STOREFRONT

1. Flexibility is requested to vary the final selection of the exterior materials within the color ranges and material types as proposed without reducing the quality of the materials and to make minor refinements to exterior details and dimensions.  
 2. Flexibility is requested to vary the approved signage provided it is consistent with the indicated dimensions and materials  
 3. Flexibility is requested to vary the non-residential storefront and associated features and fixtures in public space subject to individual tenant modifications  
 4. Flexibility is requested to vary exterior ornamentation based on comments from National Park Service  
 5. Flexibility is requested to vary the window frames to light grey, grey or black

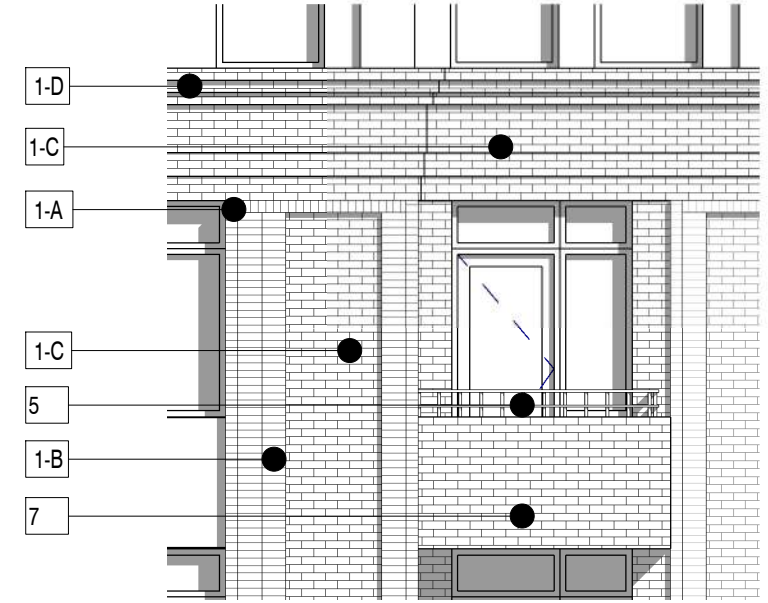




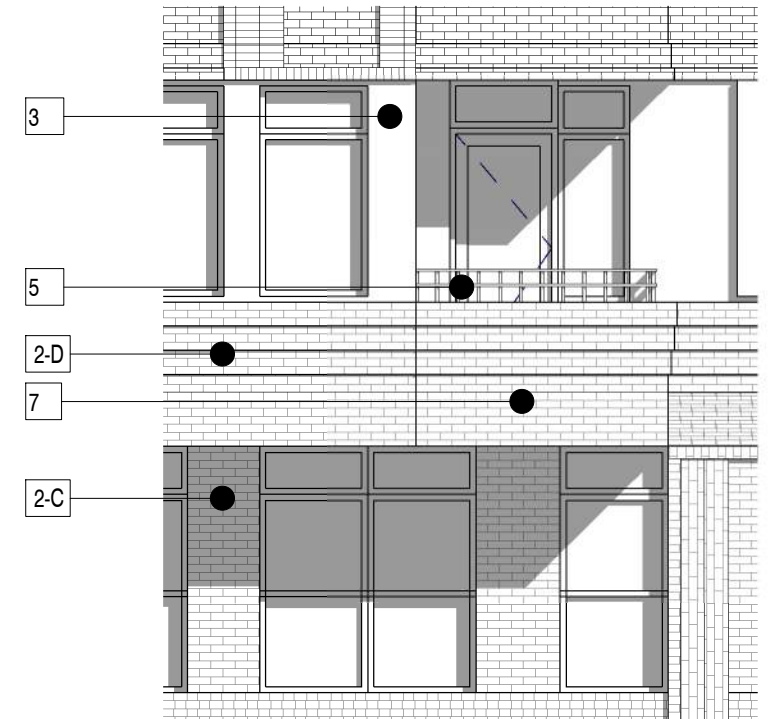
1 Partial Section 3  
1/16" = 1'-0"



2 Partial Elevation 3  
1/16" = 1'-0"



3 Partial Elevation 3 - Callout 1  
3/16" = 1'-0"



4 Partial Elevation 3 - Callout 2  
3/16" = 1'-0"



1. ET CLAY  
HERITAGE RED BLEND BRICK  
A. SOLDIER BRICK PATTERN  
B. STACK BRICK PATTERN  
C. RUNNING BOND STANDARD BRICK  
D. BRICK CORNICE



2. BELDEN  
ASHBERRY VELOUR BRICK  
A. SOLDIER BRICK PATTERN  
B. STACK BRICK PATTERN  
C. RUNNING BOND STANDARD BRICK  
D. BRICK CORNICE



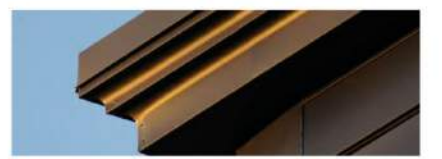
3. NICHIIHA\_GREY SMOOTH NICHIPANEL



4. STOREFRONT



5. METAL BALCONY /  
JULIETTE RAILING

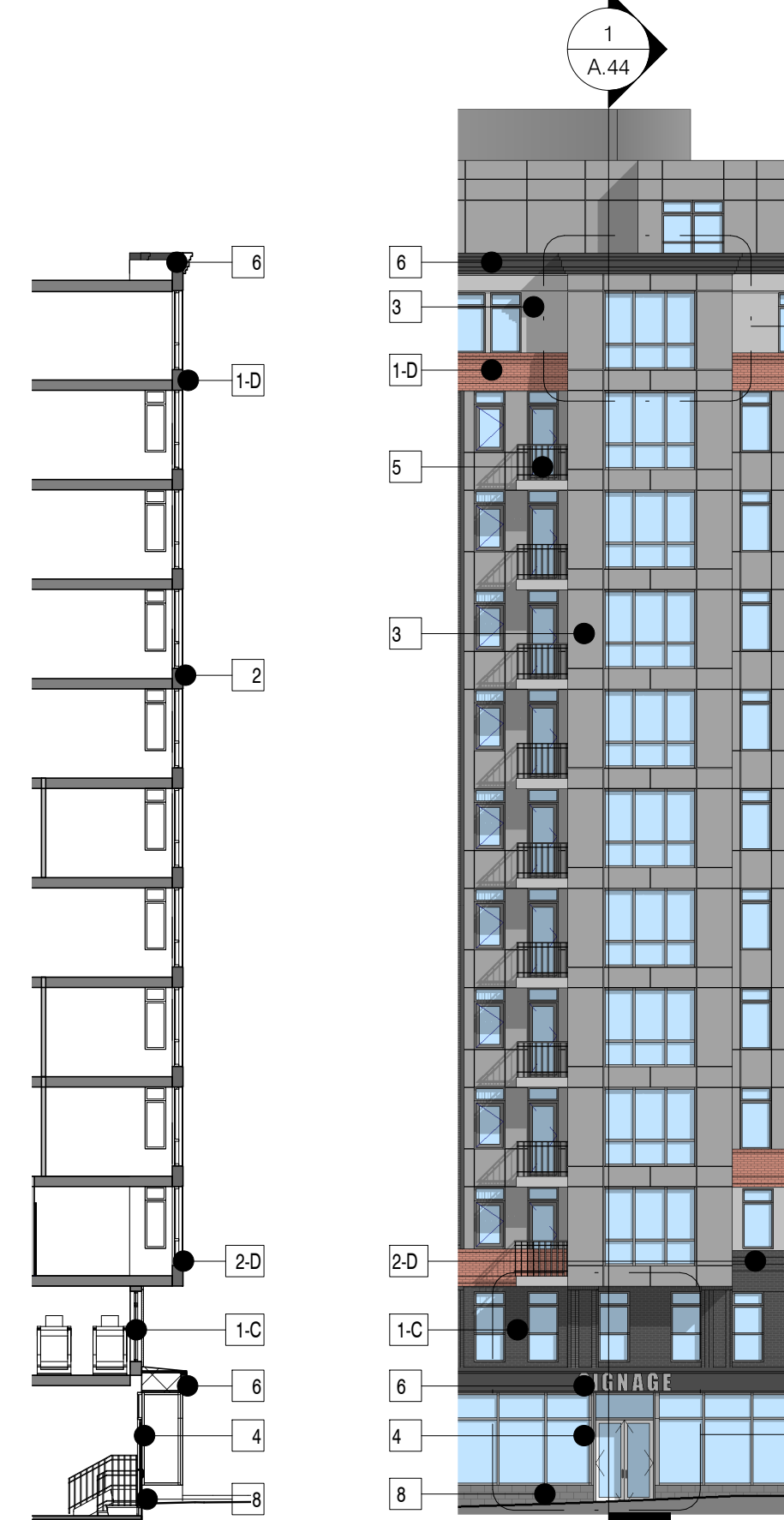


6. METAL COPING SYSTEM



7. BRICK BALCONY

1. Flexibility is requested to vary the final selection of the exterior materials within the color ranges and material types as proposed without reducing the quality of the materials and to make minor refinements to exterior details and dimensions.  
2. Flexibility is requested to vary the approved signage provided it is consistent with the indicated dimensions and materials  
3. Flexibility is requested to vary the non-residential storefront and associated features and fixtures in public space subject to individual tenant modifications  
4. Flexibility is requested to vary exterior ornamentation based on comments from National Park Service  
5. Flexibility is requested to vary the window frames to light grey, grey or black

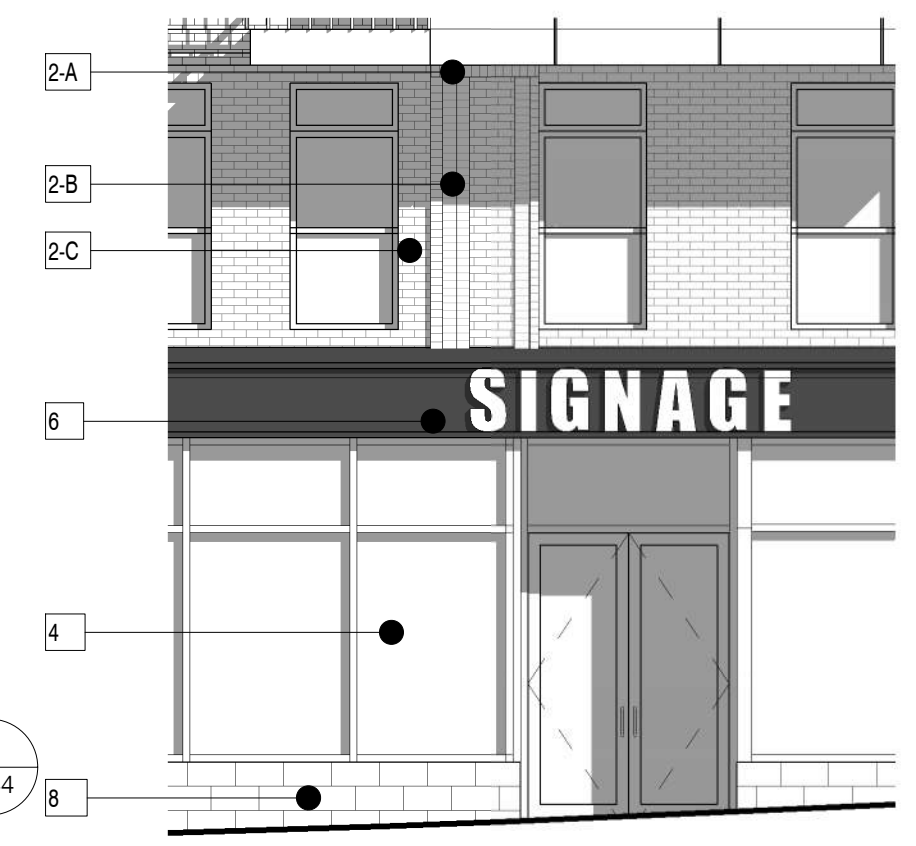


1 Partial Section 4  
1/16" = 1'-0"

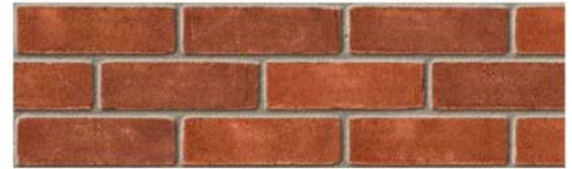
2 Partial Elevation 4  
1/16" = 1'-0"



3 Partial Elevation 4 - Callout 1  
3/16" = 1'-0"



4 Partial Elevation 4 - Callout 2  
3/16" = 1'-0"



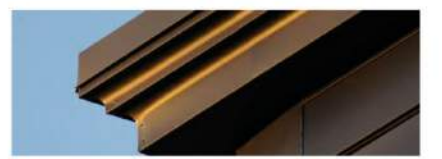
1. ET CLAY  
HERITAGE RED BLEND BRICK  
A. SOLDIER BRICK PATTERN  
B. STACK BRICK PATTERN  
C. RUNNING BOND STANDARD BRICK  
D. BRICK CORNICE



5. METAL BALCONY /  
JULIETTE RAILING



2. BELDEN  
ASHBERRY VELOUR BRICK  
A. SOLDIER BRICK PATTERN  
B. STACK BRICK PATTERN  
C. RUNNING BOND STANDARD BRICK  
D. BRICK CORNICE



6. METAL COPING SYSTEM



3. NICHIBA\_GREY SMOOTH NICHIPANEL



7. BRICK BALCONY



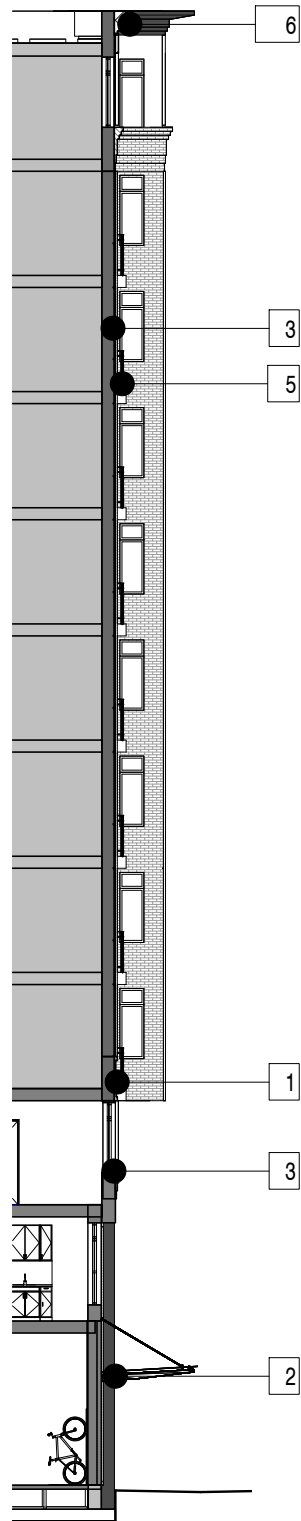
4. STOREFRONT



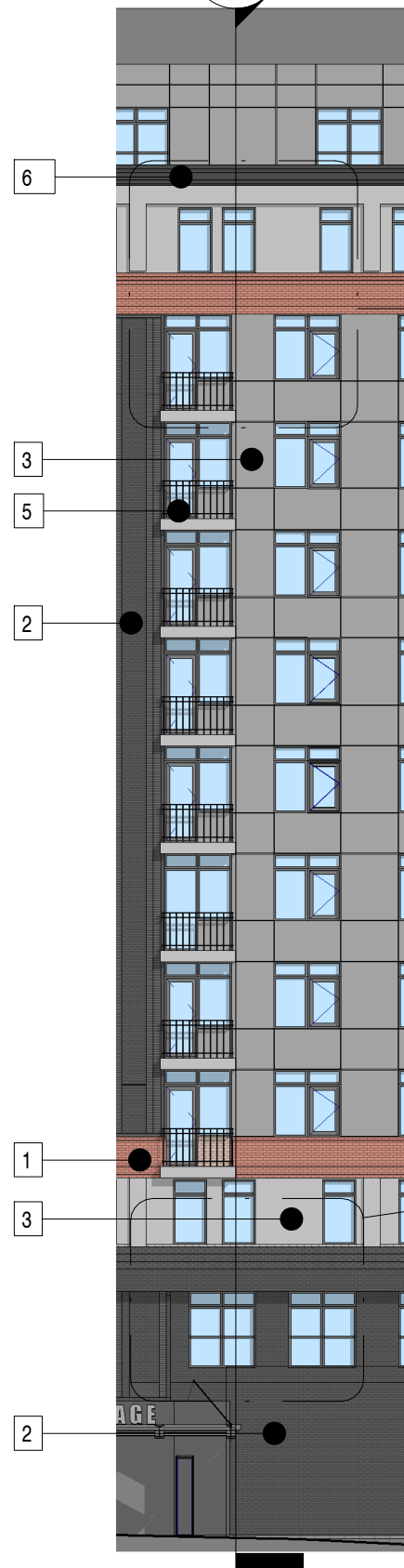
8. STONE BASE

1. Flexibility is requested to vary the final selection of the exterior materials within the color ranges and material types as proposed without reducing the quality of the materials and to make minor refinements to exterior details and dimensions.  
2. Flexibility is requested to vary the approved signage provided it is consistent with the indicated dimensions and materials.  
3. Flexibility is requested to vary the non-residential storefront and associated features and fixtures in public space subject to individual tenant modifications.  
4. Flexibility is requested to vary exterior ornamentation based on comments from National Park Service.  
5. Flexibility is requested to vary the window frames to light grey, grey or black.





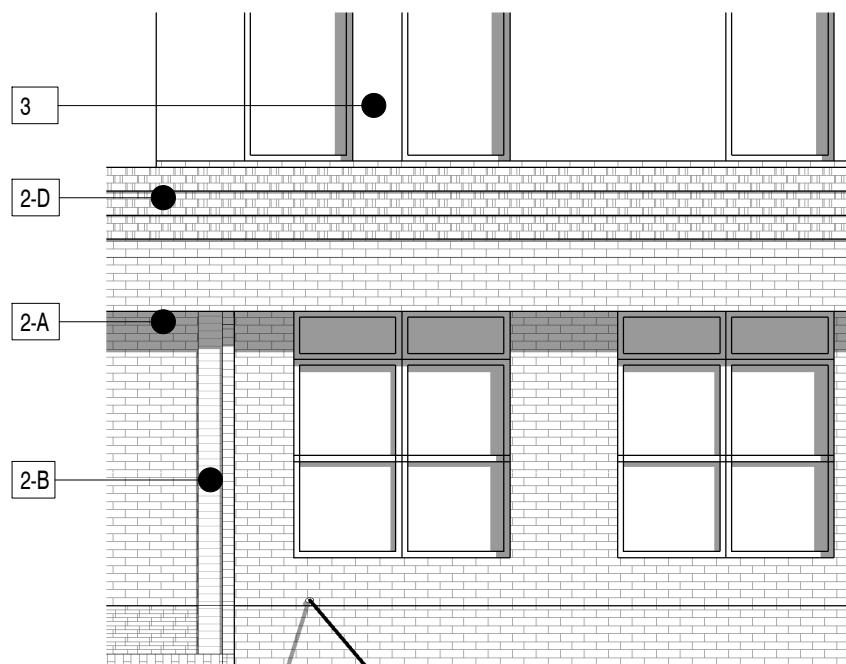
1 Partial Section 5  
1/16" = 1'-0"



2 Partial Elevation 5  
1/16" = 1'-0"



3 Partial Elevation 5 - Callout 1  
3/16" = 1'-0"



4 Partial Elevation 5 - Callout 2  
3/16" = 1'-0"



1. ET CLAY  
HERITAGE RED BLEND BRICK

- A. SOLDIER BRICK PATTERN
- B. STACK BRICK PATTERN
- C. RUNNING BOND STANDARD BRICK
- D. BRICK CORNICE



2. BELDEN  
ASHBERRY VELOUR BRICK

- A. SOLDIER BRICK PATTERN
- B. STACK BRICK PATTERN
- C. RUNNING BOND STANDARD BRICK
- D. BRICK CORNICE



3. NICHIIHA\_GREY SMOOTH NICHIPANEL



4. STOREFRONT

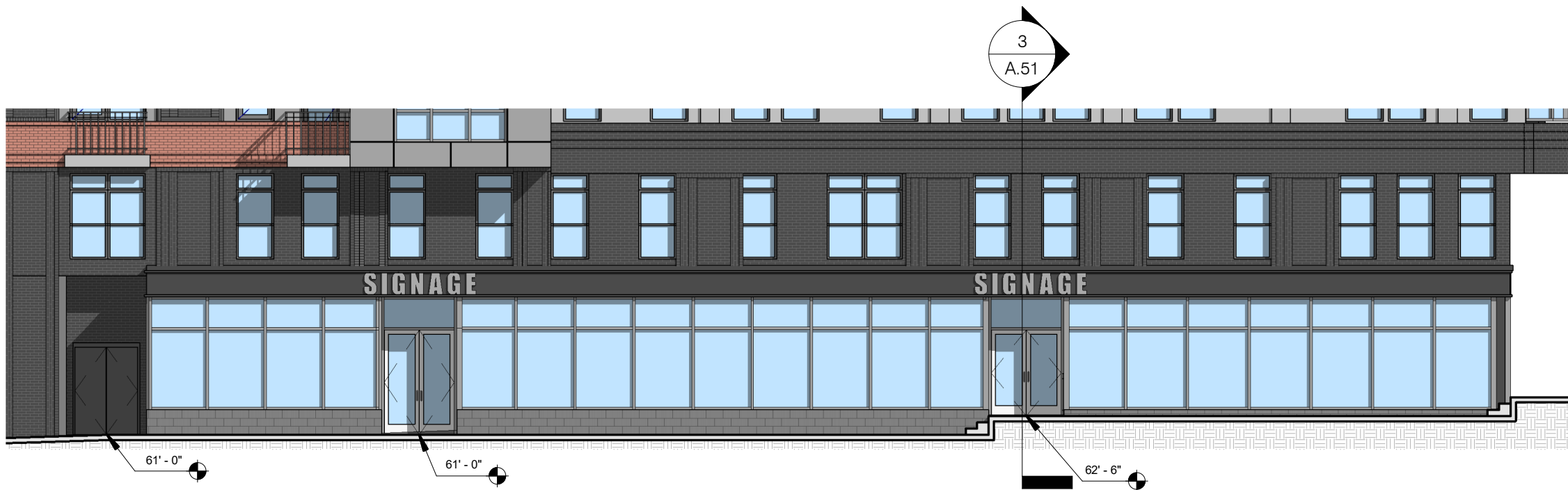


5. METAL BALCONY /  
JULIETTE RAILING

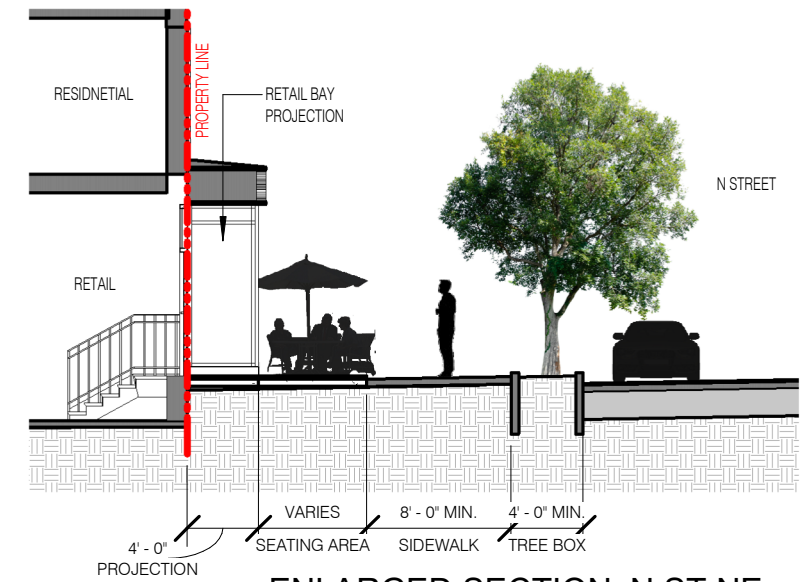


6. METAL COPING SYSTEM

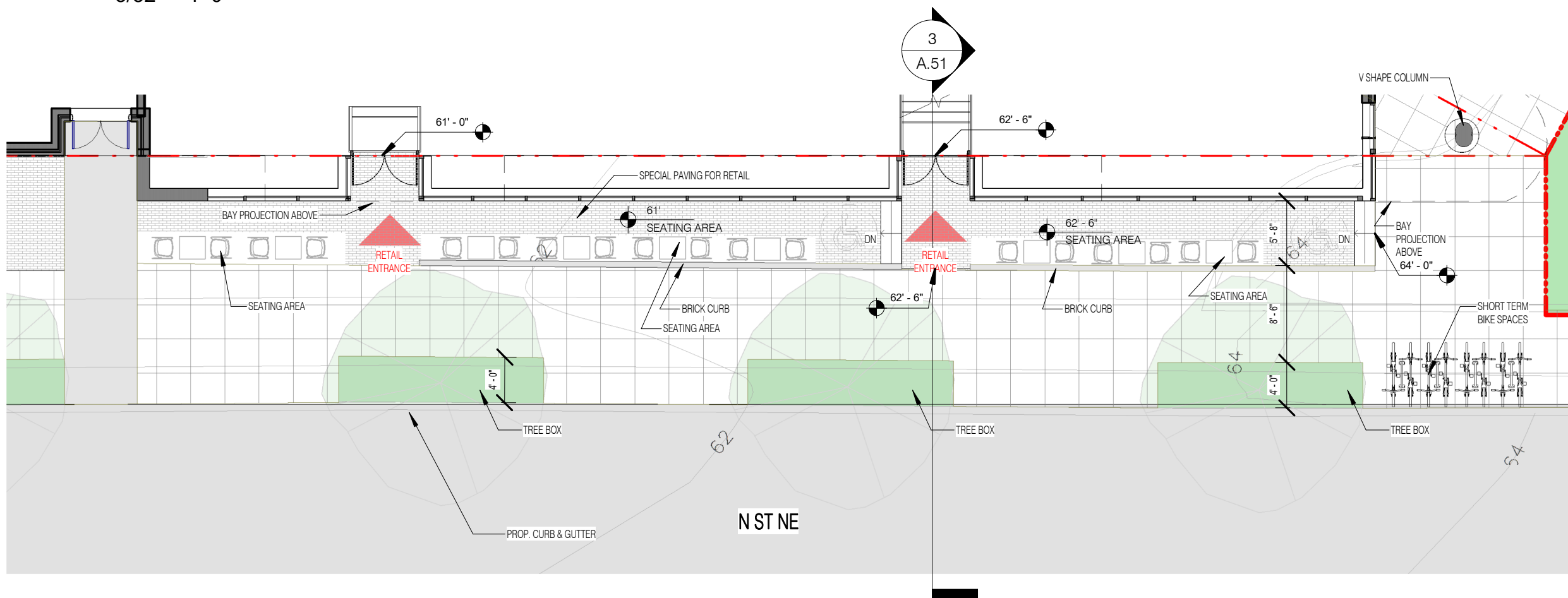
1. Flexibility is requested to vary the final selection of the exterior materials within the color ranges and material types as proposed without reducing the quality of the materials and to make minor refinements to exterior details and dimensions.  
 2. Flexibility is requested to vary the approved signage provided it is consistent with the indicated dimensions and materials.  
 3. Flexibility is requested to vary the non-residential storefront and associated features and fixtures in public space subject to individual tenant modifications.  
 4. Flexibility is requested to vary exterior ornamentation based on comments from National Park Service.  
 5. Flexibility is requested to vary the window frames to light grey, grey or black.



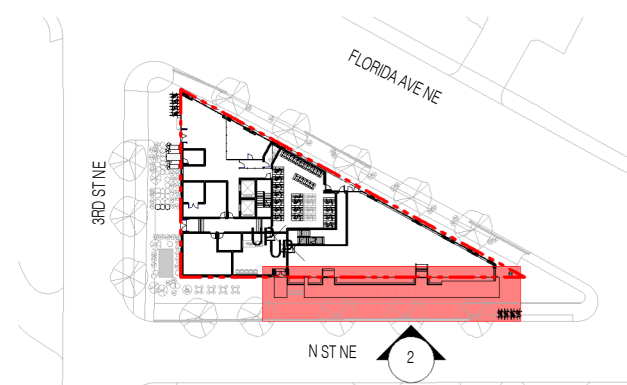
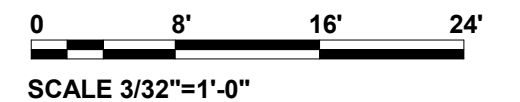
2 ENLARGED ELEVATION N ST NE  
3/32" = 1'-0"



3 ENLARGED SECTION N ST NE  
3/32" = 1'-0"

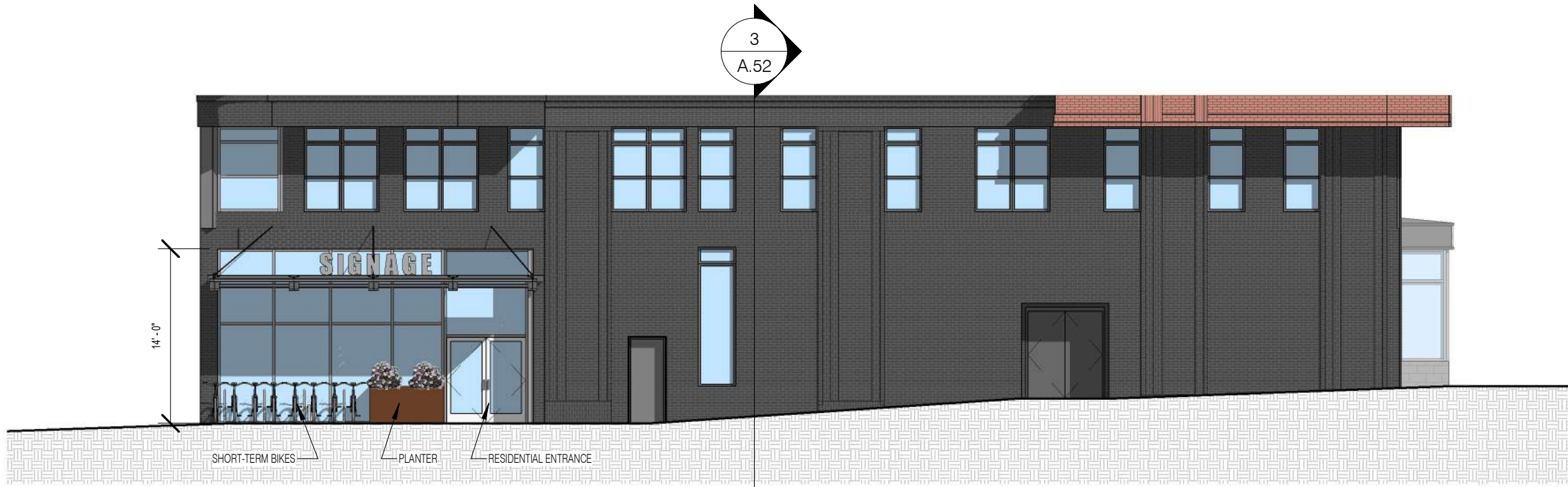


1 STREETScape - N ST NE  
3/32" = 1'-0"

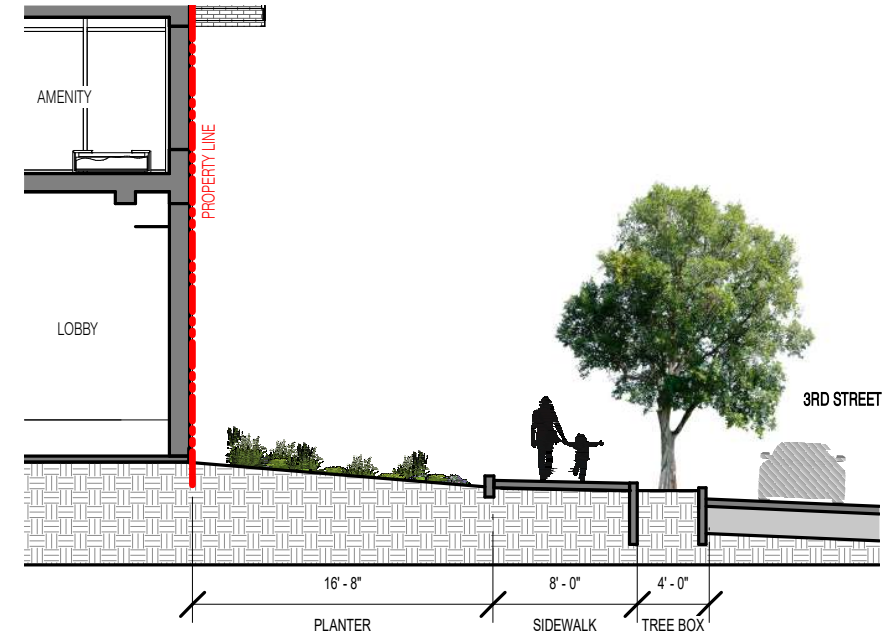


1. Flexibility is requested to vary the location, attributes, and general design of the approved streetscape to comply with the requirements of and approval by the DDOT Public Space Division.

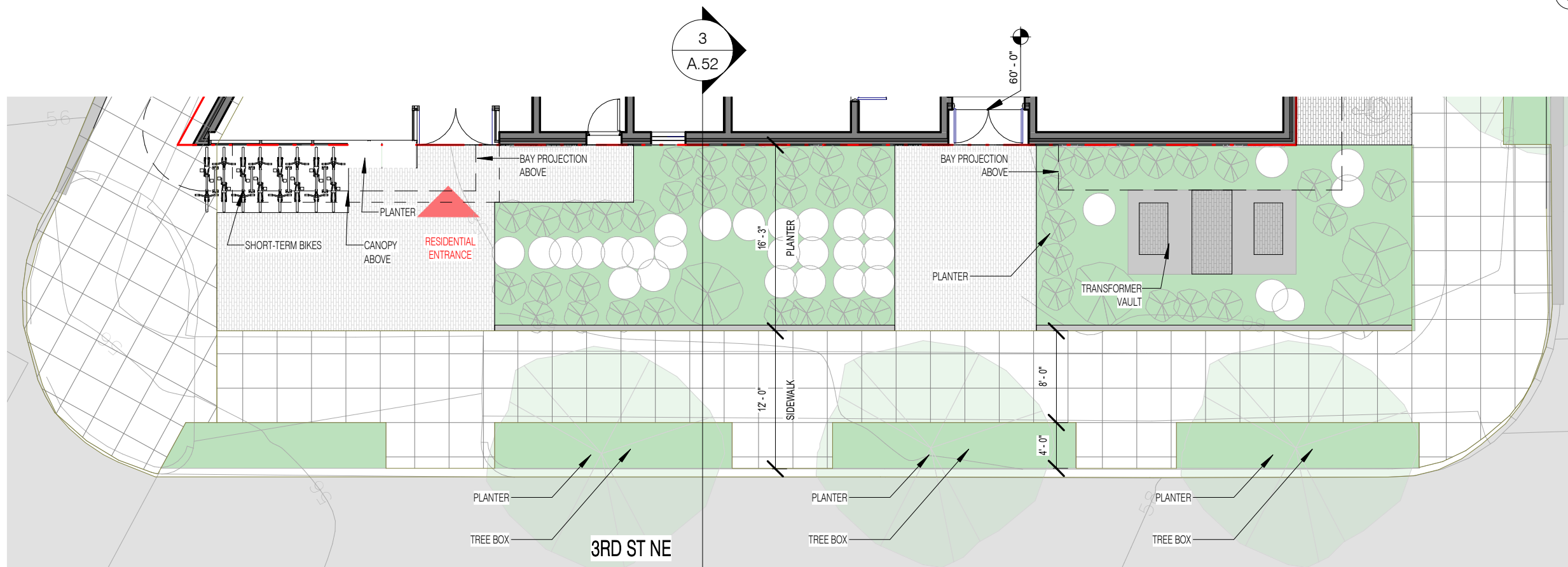




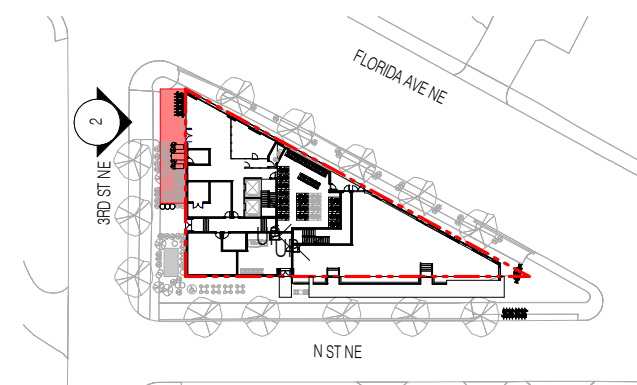
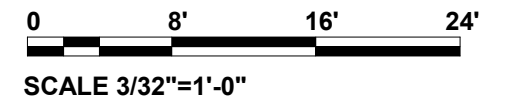
2 ENLARGED ELEVATION - 3RD ST  
3/32" = 1'-0"



3 ENLARGED SECTION\_3RD  
3/32" = 1'-0"

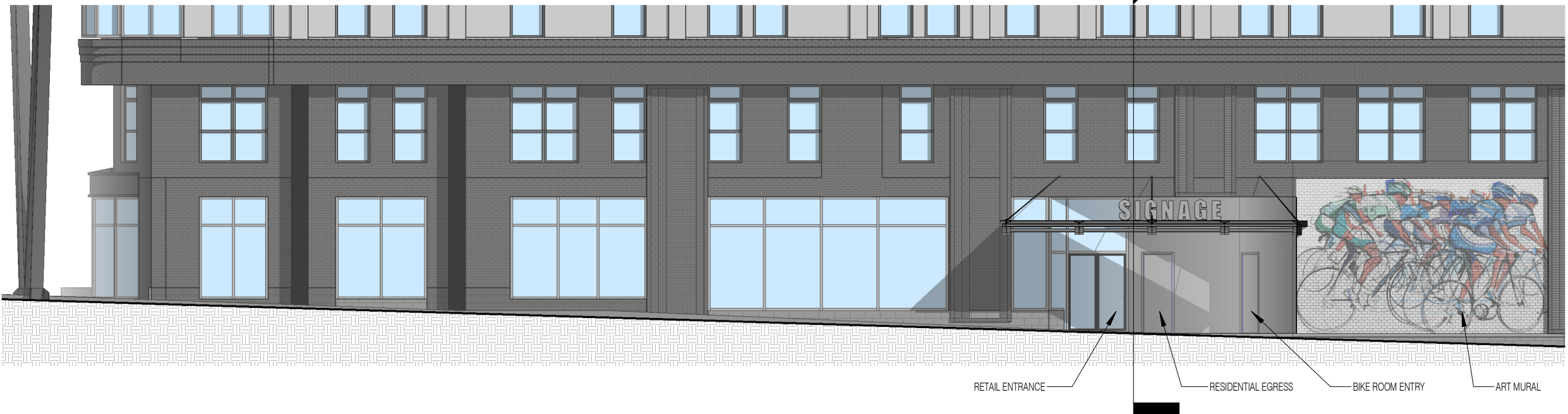


1 STREETSCAPE - 3RD ST NE  
3/32" = 1'-0"

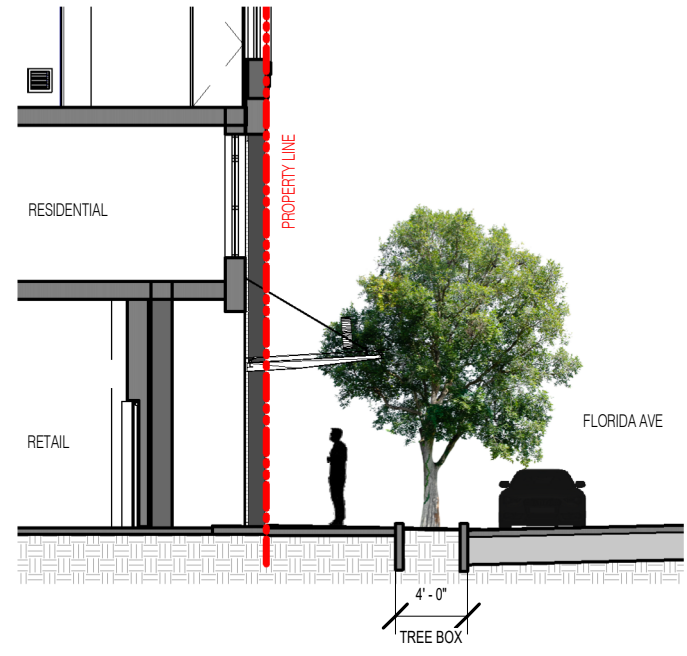


1. Flexibility is requested to vary the location, attributes, and general design of the approved streetscape to comply with the requirements of and approval by the DDOT Public Space Division.

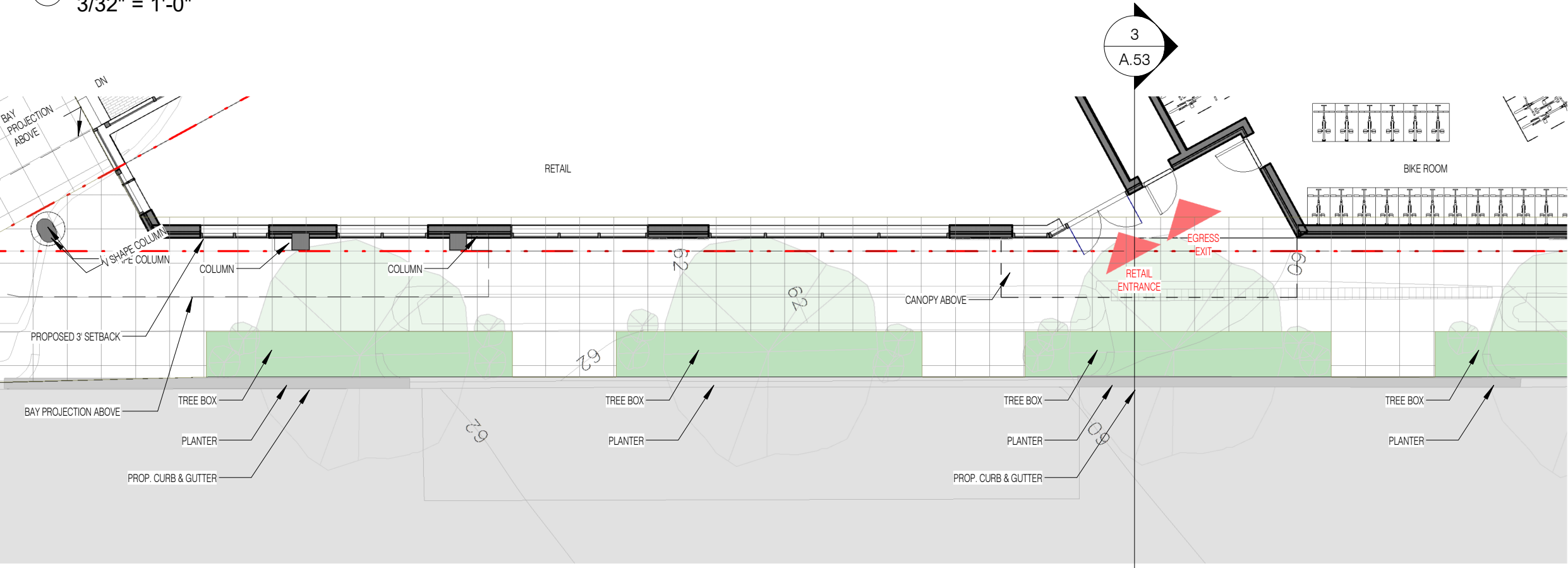
3  
A.53



2 ENLARGED ELEVATION FLORIDA AVE NE  
3/32" = 1'-0"

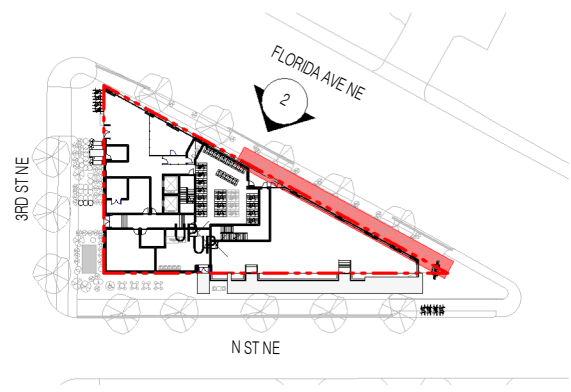


3 ENLARGED SECTION FLORIDA AVE NE  
3/32" = 1'-0"



1 STREETScape - FLORIDA AVE NE  
3/32" = 1'-0"

0 8' 16' 24'  
SCALE 3/32"=1'-0"



1. Flexibility is requested to vary the location, attributes, and general design of the approved streetscape to comply with the requirements of and approval by the DDOT Public Space Division.





NoMa/Union Market Affordable

301 Florida Ave NE, Washington, DC 20002

RENDERING OF FLORIDA AVE FACADE | A.70

COPYRIGHT © 2020 PGN ARCHITECTS, PLLC



12/02/2021







NoMa/Union Market Affordable

301 Florida Ave NE, Washington, DC 20002

RENDERING OF 3RD & N ST FACADE | A.71

COPYRIGHT © 2020 PGN ARCHITECTS, PLLC



12/02/2021







NoMa/Union Market Affordable

301 Florida Ave NE, Washington, DC 20002

RENDERING OF FLORIDA AVE FACADE | A.72

COPYRIGHT © 2020 PGN ARCHITECTS, PLLC



12/02/2021







NoMa/Union Market Affordable

301 Florida Ave NE, Washington, DC 20002

PERSPECTIVE RENDERING (3RD ST @ FLORIDA AVE.) A.72A

COPYRIGHT © 2020 PGN ARCHITECTS, PLLC



12/02/2021







NoMa/Union Market Affordable

301 Florida Ave NE, Washington, DC 20002

PERSPECTIVE RENDERING FROM FLORIDA AVE | A.72B

COPYRIGHT © 2020 PGN ARCHITECTS, PLLC



12/02/2021







NoMa/Union Market Affordable

301 Florida Ave NE, Washington, DC 20002

PERSPECTIVE RENDERING FROM N ST | A.72C

COPYRIGHT © 2020 PGN ARCHITECTS, PLLC



12/02/2021

